

SOFTWARE SETUP

Model
B-150D-MRPL
B-150D-BRPL
B-190TB
B-290TB

Version: 2.1 2020



Table of Contents

1.	Software installation	3
1.1	B-190TB / B-290TB	3
1.2	B-150D series	3
2.	Using the camera	3
2.1	Run the Software	3
2.2	Using the Software	3
2.3	Setting camera parameters	4
3.	Micrometric Slide M-005	5

1. Software installation

1.1 B-190TB / B-290TB

No software installation is required.

Software is pre-installed before the shipment from the factory.

1.2 B-150D series

The camera is driven by the PROVIEW software.

PROVIEW can be downloaded from the site:

<http://www.optikamicroscopes.com/optikamicroscopes/optika-support/download-drivers-softwares/>

You will have to register to download the **Optikaproview.zip** file.

Once the file has been downloaded, you will have unzip it and run the **setup.exe** file.

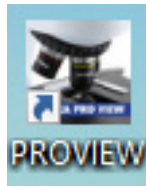
At the end of the installation it is possible to start the Software.

- **NOTE: no driver installation is required for the cameras. The Software installation automatically installs all the needed drivers for the correct operation of the camera.**

2. Using the camera

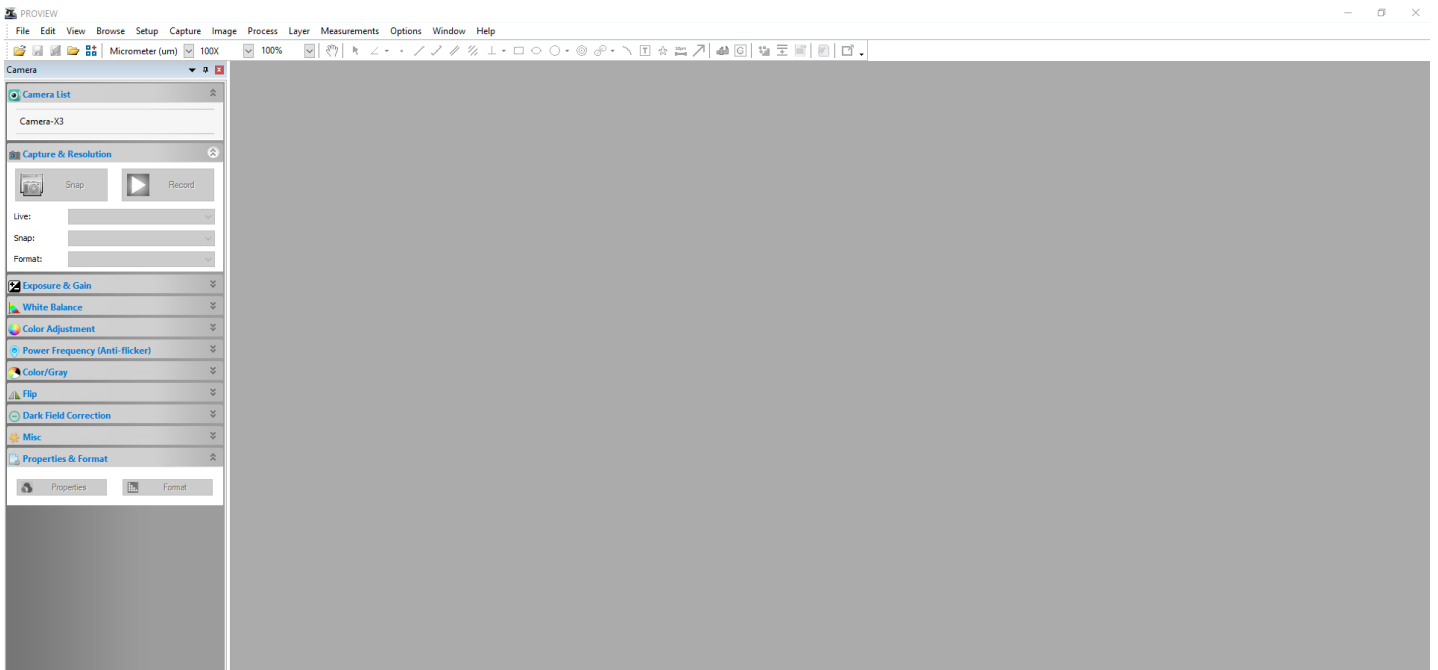
2.1 Run the Software

1. Double click on the PROVIEW icon on the desktop.

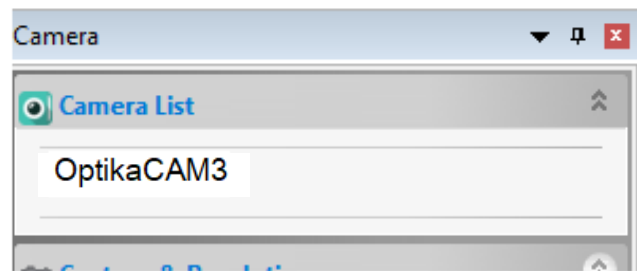


2.2 Using the Software

1. The Software main screen appears:



-
- In the **Camera List** section select the available camera **OptikaCAM3**.



- Live image starts.

2.3 Setting camera parameters

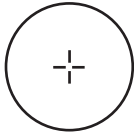
The Software user manual is available in PDF format within the Software itself and can be opened using the F1 function key.

You must have Acrobat Reader installed to view the manual.

The manual contains all the operating instructions for using the camera and for the various functions of the Software.

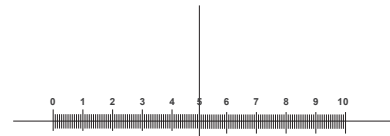
3. Micrometric Slide M-005

Micrometric slide, 26x76mm, with 2 scales
(1mm/100div. for biological microscopes / 10mm/100div. for stereomicroscopes)



1 DIV=0.01mm

For biological microscopes calibration



1 DIV=0.1mm

For stereo microscopes calibration

OPTIKA® S.r.l.

Via Rigla, 30 - 24010 Ponteranica (BG) - ITALY Tel.: +39 035.571.392
info@optikamicroscopes.com - www.optikamicroscopes.com

OPTIKA® Spain
spain@optikamicroscopes.com

OPTIKA® USA
usa@optikamicroscopes.com

OPTIKA® China
china@optikamicroscopes.com

OPTIKA® India
india@optikamicroscopes.com

OPTIKA® Central America
camerica@optikamicroscopes.com

SET-UP DEL SOFTWARE

Modello
B-150D-MRPL
B-150D-BRPL
B-190TB
B-290TB

Versione: 2.1 2020



Sommario

1.	Installazione del Software	9
1.1	B-190TB / B-290TB	9
1.2	Serie B-150D	9
2.	Uso della telecamera	9
2.1	Avviare il Software	9
2.2	Uso del Software	9
2.3	Impostare i parametri della telecamera	10
3.	Vetrino Micrometrico M-005	11

1. Installazione del Software

1.1 B-190TB / B-290TB

Non è necessaria l'installazione di nessun software.

Il software è pre-installato prima della spedizione dalla fabbrica.

1.2 Serie B-150D

La telecamera viene comandata del software PROVIEW.

PROVIEW può essere scaricato dal sito:

<http://www.optikamicroscopes.com/optikamicroscopes/optika-support/download-drivers-softwares/>

Si dovrà provvedere alla registrazione per poter scaricare il file **Optikaproview.zip**.

Dopo avere scaricato il file si deve scompattare e poi eseguire il file **setup.exe**.

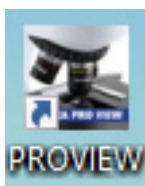
Alla fine dell'installazione è possibile avviare il software.

- **NOTA: non è richiesta l'installazione di nessun driver per le telecamere. L'installazione del Software installa automaticamente tutti i driver necessari al corretto funzionamento della telecamera.**

2. Uso della telecamera

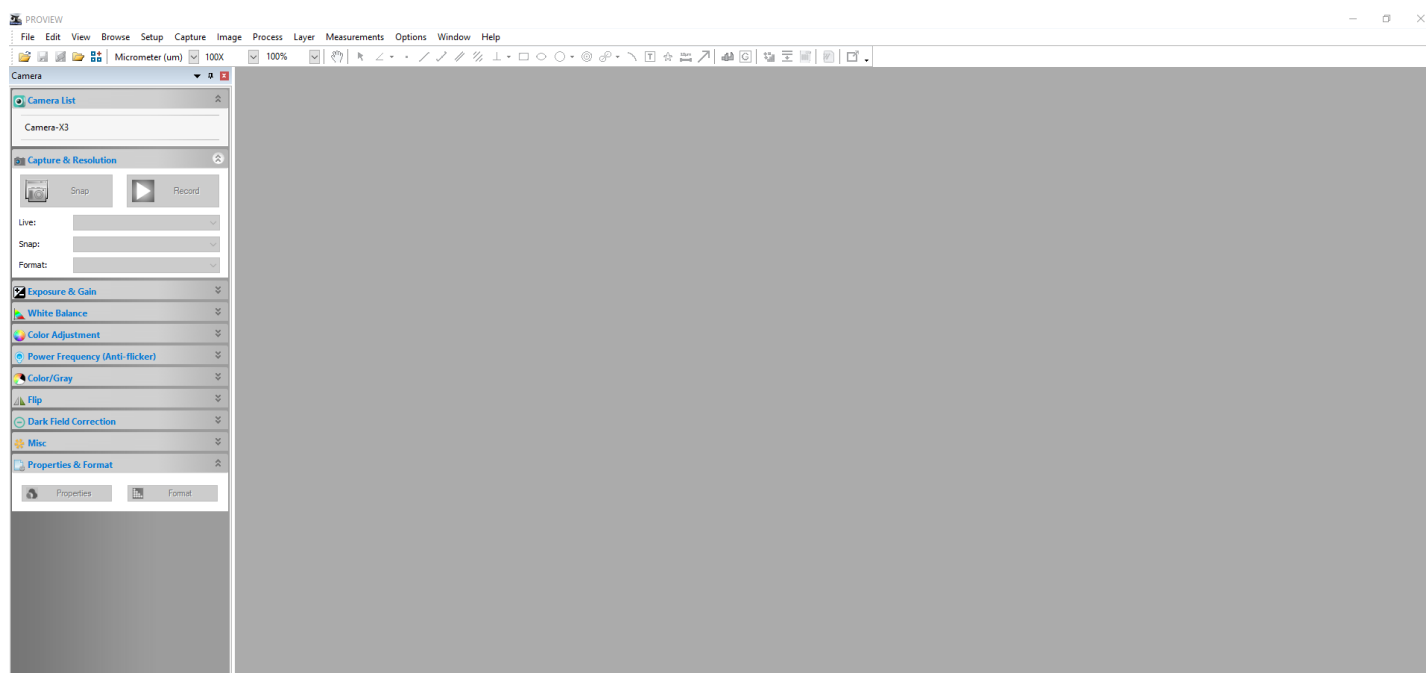
2.1 Avviare il Software

Fare doppio clic sull'icona PROVIEW sul desktop.

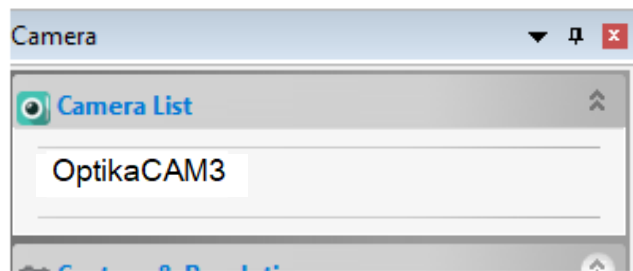


2.2 Uso del Software

1. Appare la schermata principale del Software:



2. Nella sezione **Camera List** selezionare la telecamera disponibile **OptikaCAM3**.



3. L'immagine live viene avviata.

2.3 Impostare i parametri della telecamera

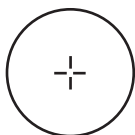
Il manuale di utilizzo del software è disponibile in formato PDF all'interno del software stesso e si può aprire mediante il tasto funzione F1.

È necessario avere installato Acrobat Reader per visualizzare il manuale.

Il manuale contiene tutte le istruzioni operative per l'utilizzo della telecamera e per le varie funzioni del software.

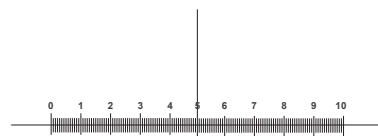
3. Vetrino Micrometrico M-005

Vetrino micrometrico, 26x76mm, con 2 scale
(1mm/100div. per microscopi biologici / 10mm/100div. per stereomicroscopi)



1 DIV=0.01mm

Per la calibrazione di un microscopio biologico



1 DIV=0.1mm

Per la calibrazione di uno stereo microscopio

OPTIKA® S.r.l.

Via Rigla, 30 - 24010 Ponteranica (BG) - ITALY Tel.: +39 035.571.392
info@optikamicroscopes.com - www.optikamicroscopes.com

OPTIKA® Spain
spain@optikamicroscopes.com

OPTIKA® USA
usa@optikamicroscopes.com

OPTIKA® China
china@optikamicroscopes.com

OPTIKA® India
india@optikamicroscopes.com

OPTIKA® Central America
camerica@optikamicroscopes.com

SETUP SOFTWARE

Modelos
B-150D-MRPL
B-150D-BRPL
B-190TB
B-290TB

Versión: 2.1 2020



Cuadro de contenidos

1.	Instalación del software	15
1.1	B-190TB / B-290TB	15
1.2	Serie B-150D	15
2.	Uso de la cámara	15
2.1	Ejecutar el software	15
2.2	Uso del software	15
2.3	Ajuste de los parámetros de la cámara	16
3.	Carro Micrométrico M-005	17

1. Instalación del software

1.1 B-190TB / B-290TB

No es necesario instalar ningún software.

El software se preinstala antes del envío desde la fábrica.

1.2 Serie B-150D

La cámara es controlada por el software PROVIEW.

PROVIEW puede ser descargado desde el sitio:

<http://www.optikamicroscopes.com/optikamicroscopes/optika-support/download-drivers-softwares/>

Tendrá que registrarse para descargar el archivo **Optikaproview.zip**.

Una vez que el archivo haya sido descargado, lo habrá descomprimido y ejecutado el archivo **setup.exe**.

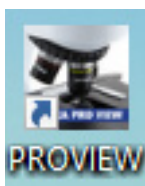
Al final de la instalación es posible iniciar el Software.

- **NOTA: no es necesaria la instalación de controladores para las cámaras. La instalación del Software instala automáticamente todos los controladores necesarios para el correcto funcionamiento de la cámara.**

2. Uso de la cámara

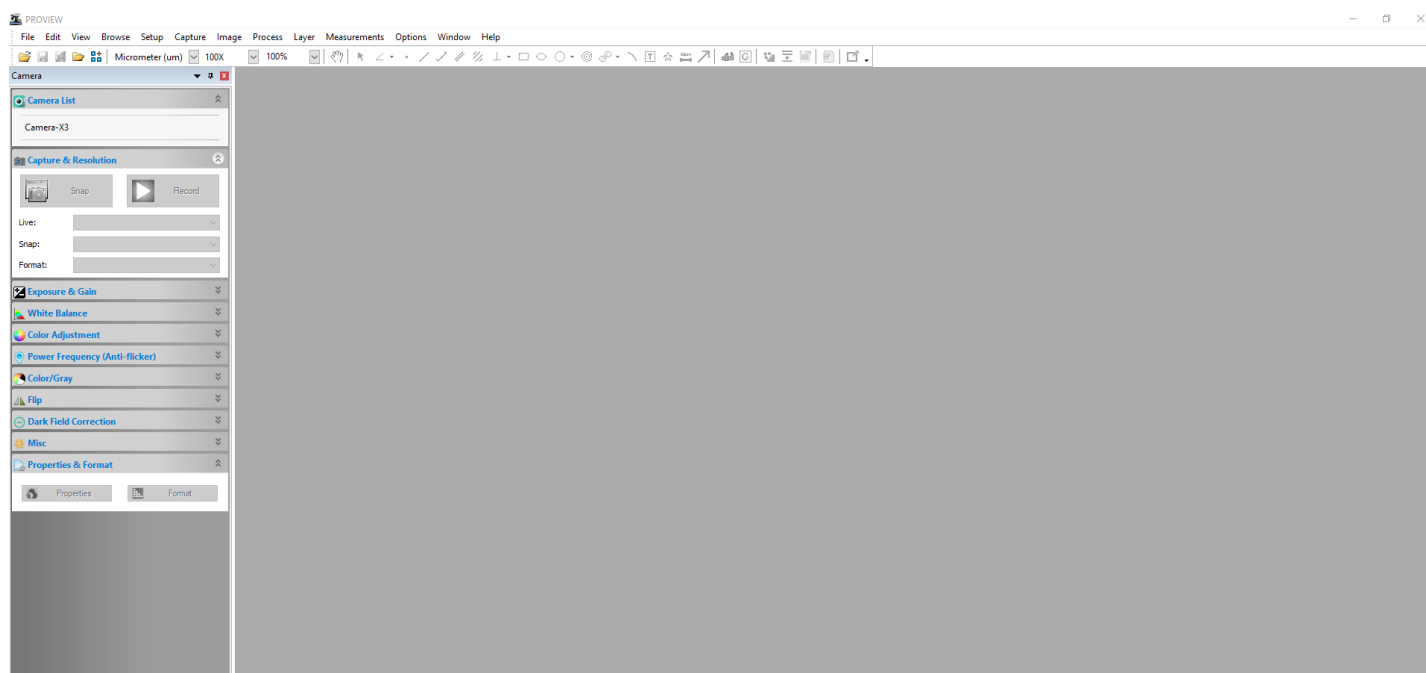
2.1 Ejecutar el software

1. Haga doble clic en el icono PROVIEW en el escritorio.

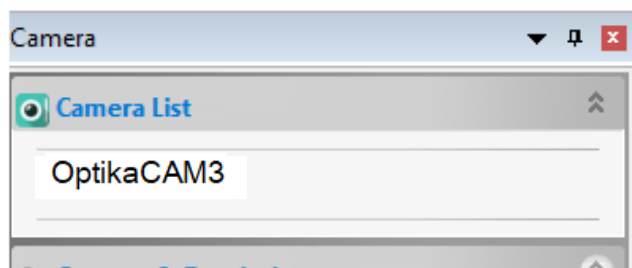


2.2 Uso del software

1. Aparece la pantalla principal del Software:



2. En la sección **Lista de Cámaras** seleccione la cámara disponible llamada **OptikaCAM3**.



3. La imagen en vivo comienza.

2.3 Ajuste de los parámetros de la cámara

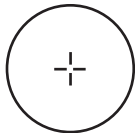
El manual del usuario del Software está disponible en formato PDF dentro del propio Software y puede abrirse utilizando la tecla de función F1.

Debe tener instalado Acrobat Reader para ver el manual.

El manual contiene todas las instrucciones de funcionamiento para el uso de la cámara y para las diversas funciones del Software.

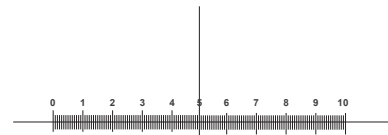
3. Carro Micrométrico M-005

Carro micrométrico, 26x76mm, con 2 escaleras
(1mm/100div. para microsc.biológicos / 10mm/100div. para estereomicroscopios)



1 DIV=0.01mm

Para calibrar un microscopio biológico



1 DIV=0.1mm

Para calibrar un estereomicroscopio

OPTIKA® S.r.l.

Via Rigla, 30 - 24010 Ponteranica (BG) - ITALY Tel.: +39 035.571.392
info@optikamicroscopes.com - www.optikamicroscopes.com

OPTIKA® Spain
spain@optikamicroscopes.com

OPTIKA® USA
usa@optikamicroscopes.com

OPTIKA® China
china@optikamicroscopes.com

OPTIKA® India
india@optikamicroscopes.com

OPTIKA® Central America
camerica@optikamicroscopes.com

CONFIGURATION DU LOGICIEL

Modèle
B-150D-MRPL
B-150D-BRPL
B-190TB
B-290TB

Version: 2.1 2020



Sommaire

1.	Installation du logiciel	21
1.1	B-190TB / B-290TB	21
1.2	Série B-150D	21
2.	Utilisation de la caméra	21
2.1	Exécuter le logiciel	21
2.2	Utilisation du logiciel	21
2.3	Réglage des paramètres de la caméra	22
3.	Glissière micrométrique M-005	23

1. Installation du logiciel

1.1 B-190TB / B-290TB

Aucune installation de logiciel n'est requise.

Le logiciel est préinstallé avant l'expédition de l'usine.

1.2 Série B-150D

La caméra est pilotée par le logiciel PROVIEW.

PROVIEW peut être téléchargé à partir du site:
<http://www.optikamicroscopes.com/optikamicroscopes/optika-support/download-drivers-softwares/>

Vous devrez vous enregistrer pour télécharger le fichier **Optikaproview.zip**.

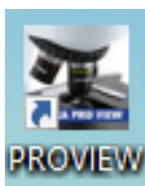
Une fois le fichier téléchargé, vous devrez le décompresser et exécuter le fichier **setup.exe**.
A la fin de l'installation, il est possible de démarrer le logiciel.

- **REMARQUE : aucune installation de pilote n'est requise pour les caméras. L'installation du logiciel installe automatiquement tous les pilotes nécessaires au bon fonctionnement de la caméra.**

2. Utilisation de la caméra

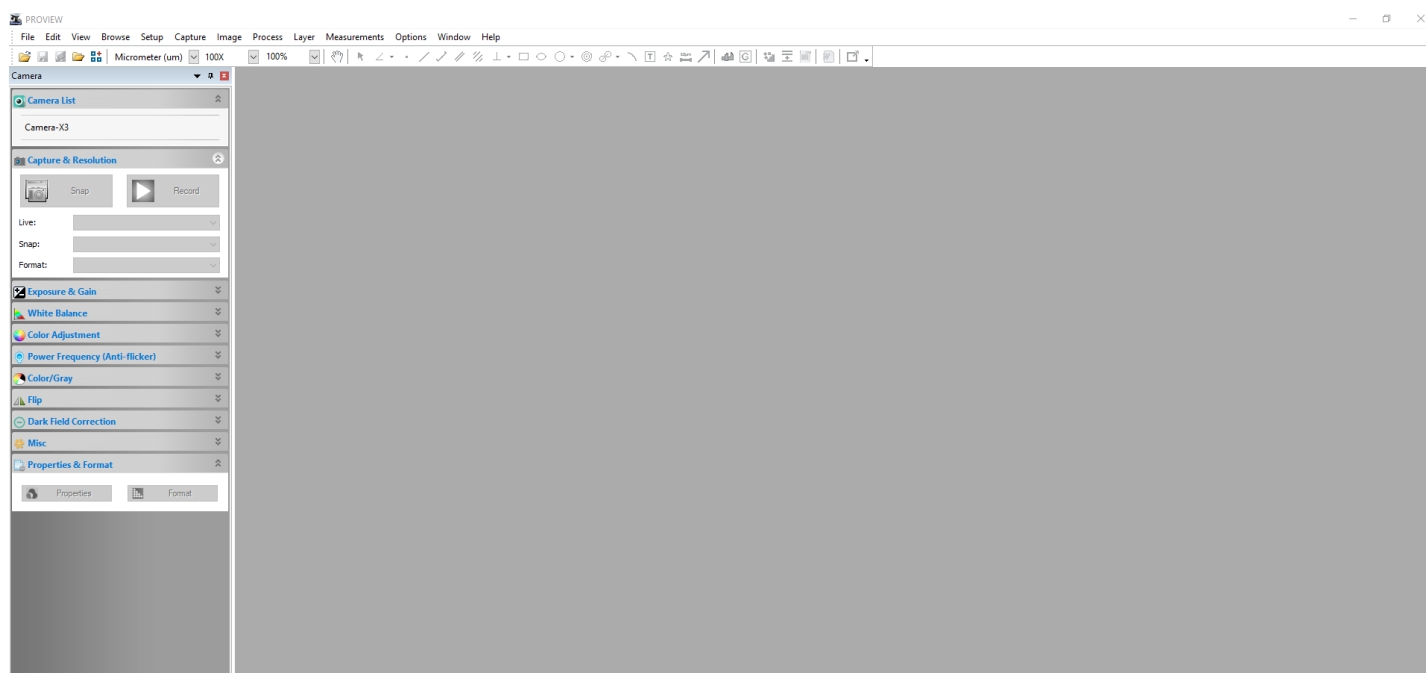
2.1 Exécuter le logiciel

1. Double-cliquez sur l'icône PROVIEW sur le bureau.

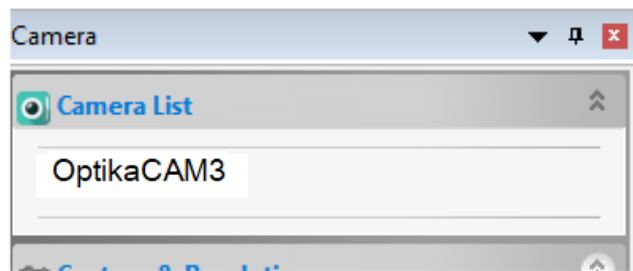


2.2 Utilisation du logiciel

1. L'écran principal du logiciel apparaît:



-
2. Dans la section **Liste des caméras**, sélectionnez la caméra disponible nommée **OptikaCAM3**.



3. L'image en direct démarre.

2.3 Réglage des paramètres de la caméra

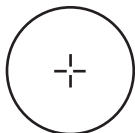
Le manuel d'utilisation du logiciel est disponible en format PDF dans le logiciel lui-même et peut être ouvert à l'aide de la touche de fonction F1.

Vous devez avoir Acrobat Reader installé pour visualiser le manuel.

Ce manuel contient toutes les instructions d'utilisation de l'appareil photo et les différentes fonctions du logiciel.

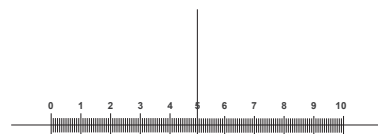
3. Glissière micrométrique M-005

Glissière micrométrique, 26x76mm, avec 2 marches
(1mm/100div. pour microscopes biologiques / 10mm/100div. pour stéréomicroscopes)



1 DIV=0.01mm

Pour l'étalonnage d'un microscope biologique



1 DIV=0.1mm

Pour l'étalonnage d'un stéréomicroscope

OPTIKA® S.r.l.

Via Rigla, 30 - 24010 Ponteranica (BG) - ITALY Tel.: +39 035.571.392
info@optikamicroscopes.com - www.optikamicroscopes.com

OPTIKA® Spain
spain@optikamicroscopes.com

OPTIKA® USA
usa@optikamicroscopes.com

OPTIKA® China
china@optikamicroscopes.com

OPTIKA® India
india@optikamicroscopes.com

OPTIKA® Central America
camerica@optikamicroscopes.com

SOFTWARE EINSTELLEN

Modell
B-150D-MRPL
B-150D-BRPL
B-190TB
B-290TB

Version: 2.1 2020



Inhalt

1.	Software installieren	27
1.1	B-190TB / B-290TB	27
1.2	B-150D-Serie	27
2.	Verwendung der Kamera	27
2.1	Starten die Software	27
2.2	Verwendung der Software	27
2.3	Anpassen der Kameraeinstellungen	28
3.	Mikrometrischer Objektträger M-005	29

1. Software installieren

1.1 B-190TB / B-290TB

Es ist keine Softwareinstallation erforderlich.

Die Software ist vorinstalliert, bevor sie ab Werk ausgeliefert wird.

1.2 B-150D-Serie

Die Kamera wird von der PROVIEW-Software gesteuert.

PROVIEW kann von der Website heruntergeladen werden:

<http://www.optikamicroscopes.com/optikamicroscopes/optika-support/download-drivers-softwares/>

Für den Download der Datei **Optikaproview.zip** müssen Sie sich registrieren.

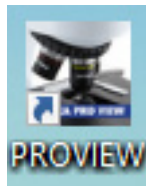
Sobald die Datei heruntergeladen wurde, müssen Sie sie dekomprimieren und die Datei **setup.exe** ausführen. Am Ende der Installation ist es möglich, die Software zu starten.

- **HINWEIS: Für Kameras ist keine Treiberinstallation erforderlich. Die Installation der Software installiert automatisch alle Treiber, die für den ordnungsgemäßen Betrieb der Kamera erforderlich sind.**

2. Verwendung der Kamera

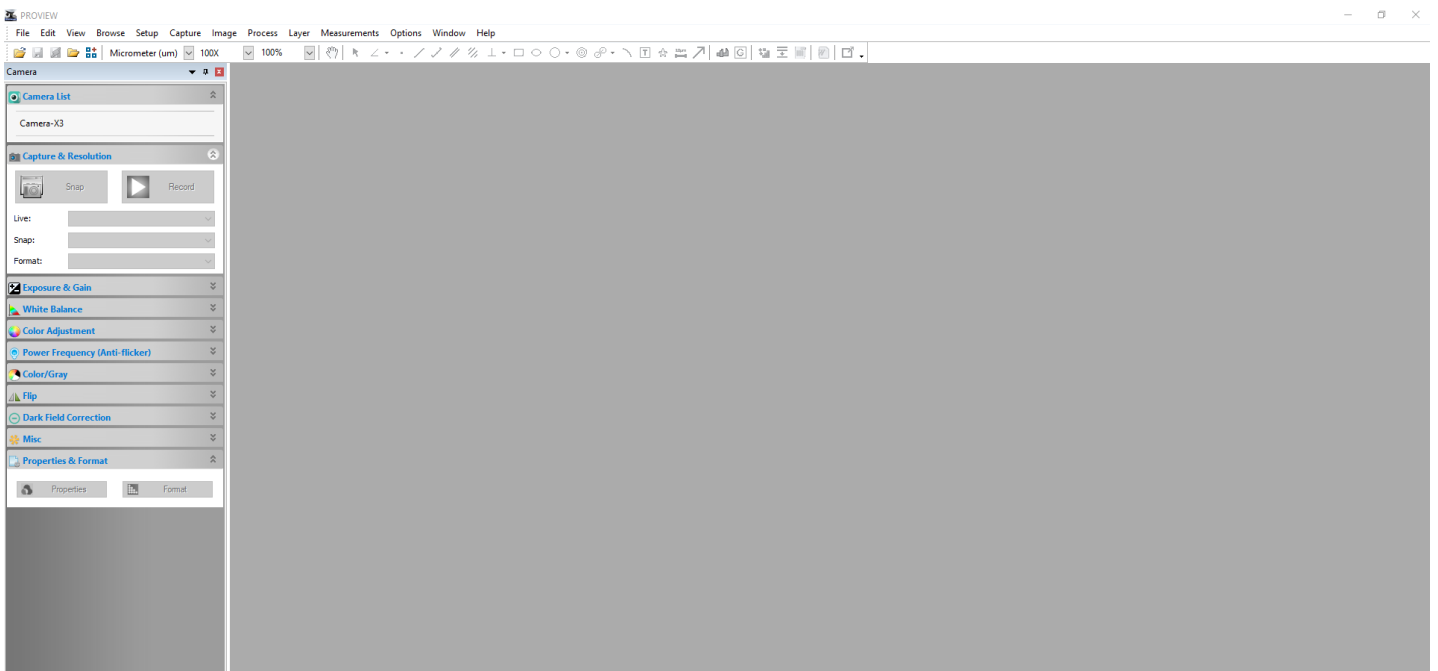
2.1 Starten die Software

1. Doppelklicken auf das PROVIEW-Symbol auf dem Desktop.

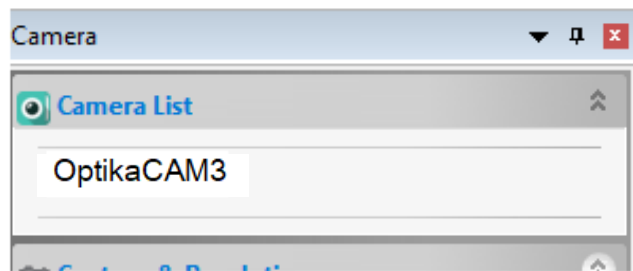


2.2 Verwendung der Software

1. Der Hauptbildschirm der Software erscheint:



2. Wählen Sie im Abschnitt **Kameraliste** die verfügbare Kamera **OptikaCAM3** aus.



3. Das Livebild startet.

2.3 Anpassen der Kameraeinstellungen

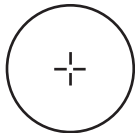
Das Software-Benutzerhandbuch liegt im PDF-Format in der Software selbst vor und kann mit der Funktionstaste F1 geöffnet werden.

Sie müssen den Acrobat Reader installiert haben, um das Handbuch anzeigen zu können.

Dieses Handbuch enthält alle Anweisungen zur Verwendung der Kamera und der verschiedenen Funktionen der Software.

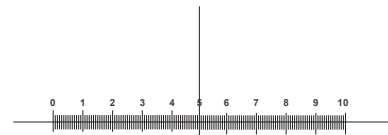
3. Mikrometrischer Objektträger M-005

Mikrometrischer Objektträger, 26x76mm, mit 2 Treppen
(1mm/100div. für biologische Mikroskope / 10mm/100div. für Stereomikroskope)



1 DIV=0.01mm

Zur Kalibrierung eines biologischen Mikroskops



1 DIV=0.1mm

Zur Kalibrierung eines Stereomikroskops

OPTIKA® S.r.l.

Via Rigla, 30 - 24010 Ponteranica (BG) - ITALY Tel.: +39 035.571.392
info@optikamicroscopes.com - www.optikamicroscopes.com

OPTIKA® Spain
spain@optikamicroscopes.com

OPTIKA® USA
usa@optikamicroscopes.com

OPTIKA® China
china@optikamicroscopes.com

OPTIKA® India
india@optikamicroscopes.com

OPTIKA® Central America
camerica@optikamicroscopes.com

CONFIGURAÇÃO DO SOFTWARE

Modelos
B-150D-MRPL
B-150D-BRPL
B-190TB
B-290TB

Versão: 2.1 2020



Tabela de Conteúdos

1.	Instalação do Software	33
1.1	B-190TB / B-290TB	33
1.2	Série B-150D	33
2.	Utilização da câmara	33
2.1	Executar o software	33
2.2	Utilização do software	33
2.3	Definir os parâmetros da câmara	34
3.	Lâmina micrométrica M-005	35

1. Instalação do Software

1.1 B-190TB / B-290TB

Nenhum software precisa ser instalado.

O software é pré-instalado antes do envio da fábrica.

1.2 Série B-150D

A câmara é controlada pelo software PROVIEW.

PROVIEW pode ser baixado do site:

<http://www.optikamicroscopes.com/optikamicroscopes/optika-support/download-drivers-softwares/>

Você precisará se registrar para baixar o arquivo **Optikaproview.zip**.

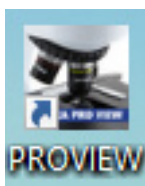
Uma vez que o arquivo tenha sido baixado, você terá descompactado e executado o arquivo **setup.exe**. No final da instalação é possível iniciar o Software.

- **NOTA: Não é necessário instalar controladores para as câmaras. A instalação do software instala automaticamente todos os drivers necessários para o correcto funcionamento da câmara.**

2. Utilização da câmara

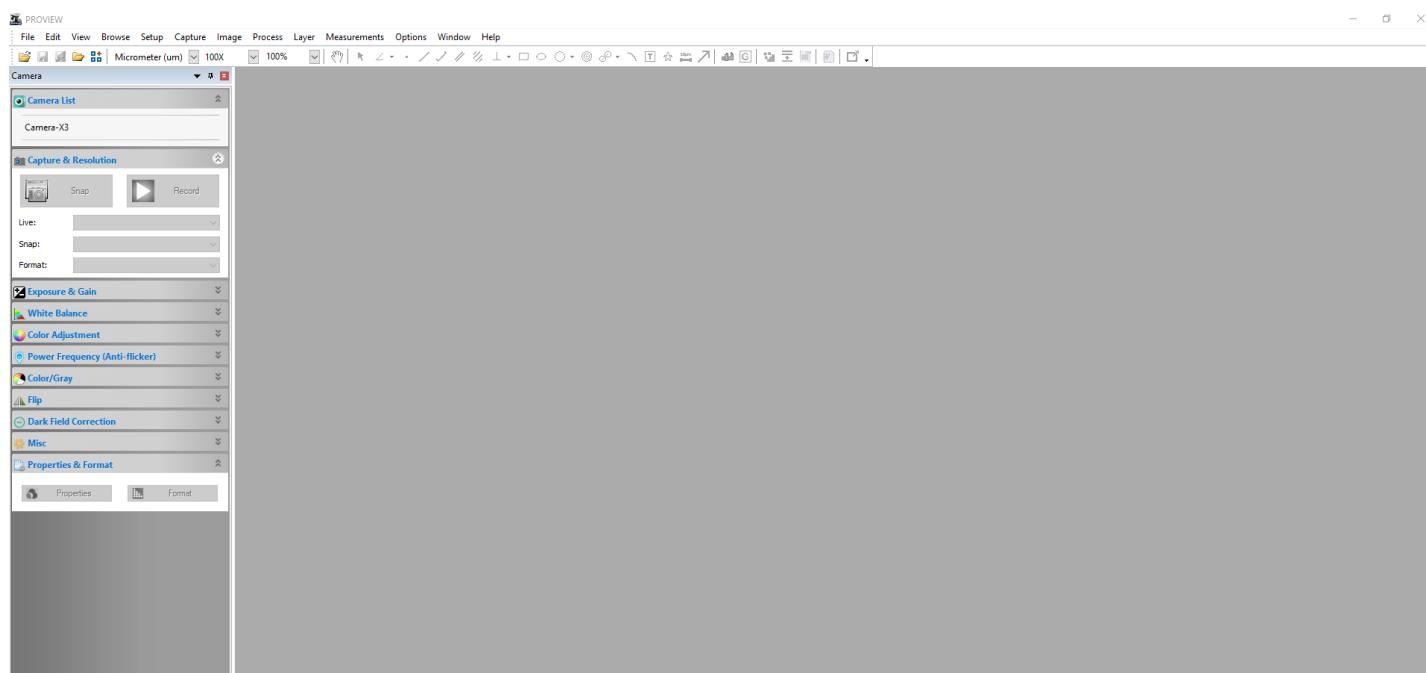
2.1 Executar o software

1. Clique duas vezes no ícone PROVIEW na área de trabalho.

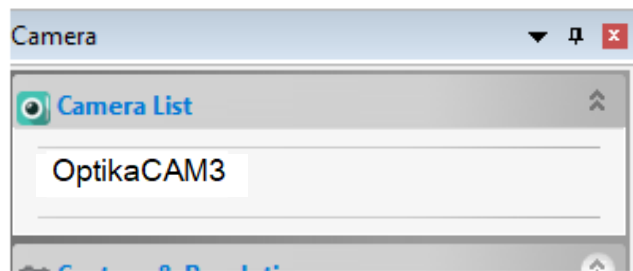


2.2 Utilização do software

1. A tela principal do software aparece:



2. Na secção **Lista de câmaras** seleccione a câmara disponível chamada **OptikaCAM3**.



3. A imagem ao vivo começa.

2.3 Definir os parâmetros da câmara

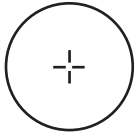
O Manual do Utilizador do Software está disponível em formato PDF dentro do próprio Software e pode ser aberto utilizando a tecla de função F1.

O Acrobat Reader deve ser instalado para visualizar o manual.

O manual contém todas as instruções de operação para o uso da câmara e para as várias funções do software.

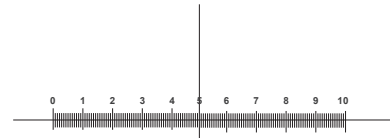
3. Lâmina micrométrica M-005

Lâmina micrométrica, 26x76mm, com 2 escadas
(1mm/100div. para microscópios biológicos / 10mm/100div. para estereomicroscópios)



1 DIV=0.01mm

Para calibrar um microscópio biológico



1 DIV=0.1mm

Para calibrar um estereomicroscópio

OPTIKA® S.r.l.

Via Rigla, 30 - 24010 Ponteranica (BG) - ITALY Tel.: +39 035.571.392
info@optikamicroscopes.com - www.optikamicroscopes.com

OPTIKA® Spain
spain@optikamicroscopes.com

OPTIKA® USA
usa@optikamicroscopes.com

OPTIKA® China
china@optikamicroscopes.com

OPTIKA® India
india@optikamicroscopes.com

OPTIKA® Central America
camerica@optikamicroscopes.com
